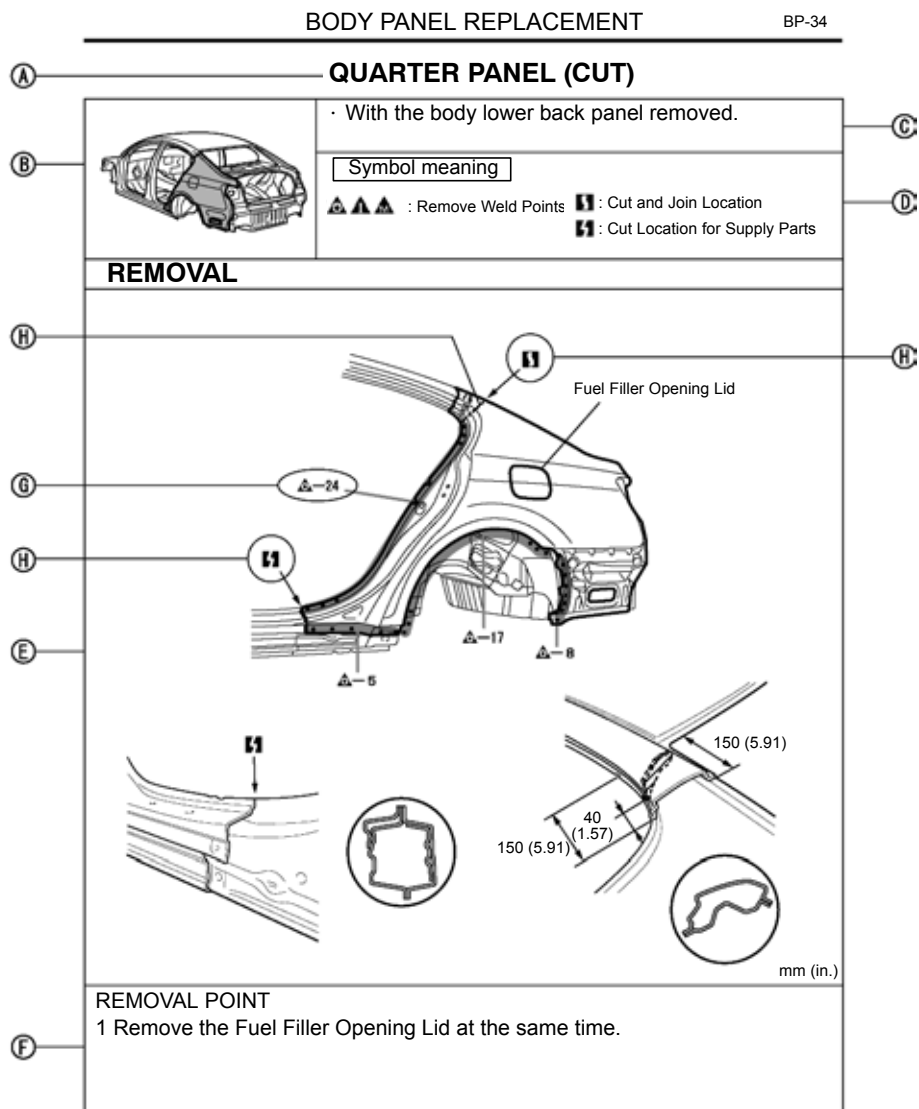


HOW TO USE THIS MANUAL

1. BODY PANEL REPLACEMENT IN THIS MANUAL



REPLACEMENT PART
QUARTER PANEL (CUT)

Replacement method
 (ASSY) ...Assembly replacement
 (CUT) ...Major cutting (less than 1/2 of part used)
 (CUT-H) ...Half cutting (about 1/2 of part used)
 (CUT-P) ...Partial cutting (most of part used)
 Replacement part

WELDING EXPLANATION (See page IN-50)

SYMBOLS (See page IN-48)

PART LOCATION

REMOVAL AND INSTALLATION CONDITIONS

SYMBOL MEANING




REMOVAL DIAGRAM



REMOVAL GUIDE

BP-38

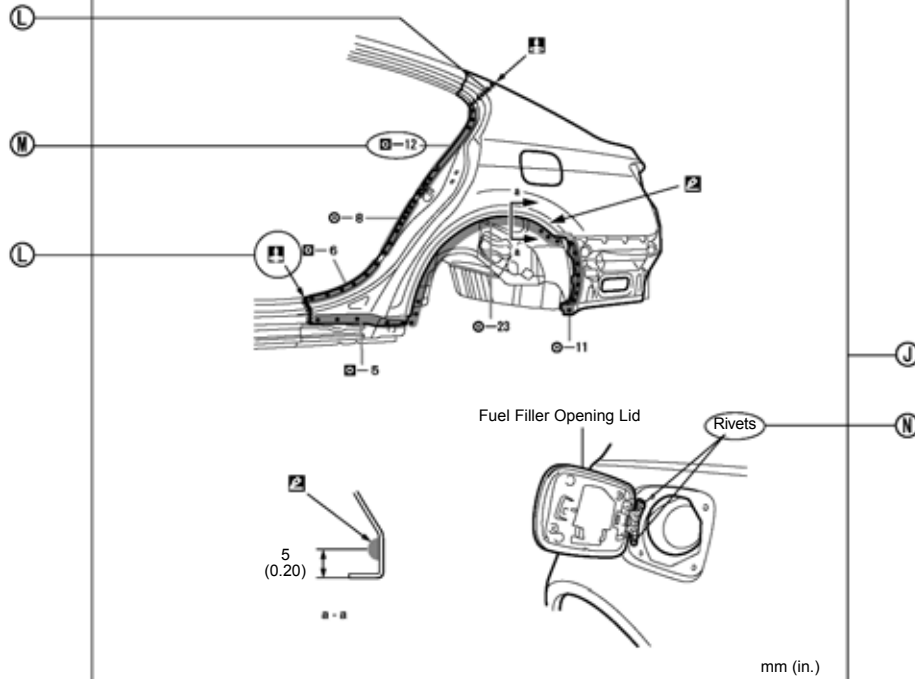
BODY PANEL REPLACEMENT

Symbol meaning

  : Mig Plug Weld
 : Body Sealer

 : Spot Weld
 : Butt Weld

INSTALLATION



INSTALLATION POINT

1 Before temporarily installing the new parts, apply body sealer to the wheel arch.

HINT:

- 1) Apply body sealer evenly about 5 mm (0.20 in.) from the flange, avoiding any oozing.
- 2) Apply sealer evenly, about 3 – 4 mm (0.12 – 0.16 in.) in diameter.
- 2 Temporarily install the new parts and measure each part of the new parts in accordance with the body dimension diagram. (See the body dimension diagram)
- 3 After welding, apply body sealer and undercoating to the corresponding parts.

① SYMBOLS

② INSTALLATION DIAGRAM

③ INSTALLATION GUIDE

④ SYMBOLS (See page IN-48)

⑤ INSTALLATION OF WELD POINTS (See page IN-50)

⑥ PART NAME