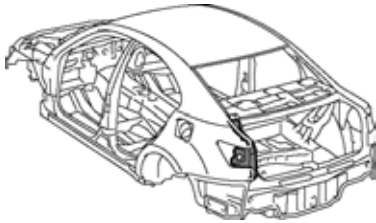


LUGGAGE COMPARTMENT OPENING TROUGH (ASSY)



B0709140126

With the quarter panel removed.

Symbol meaning

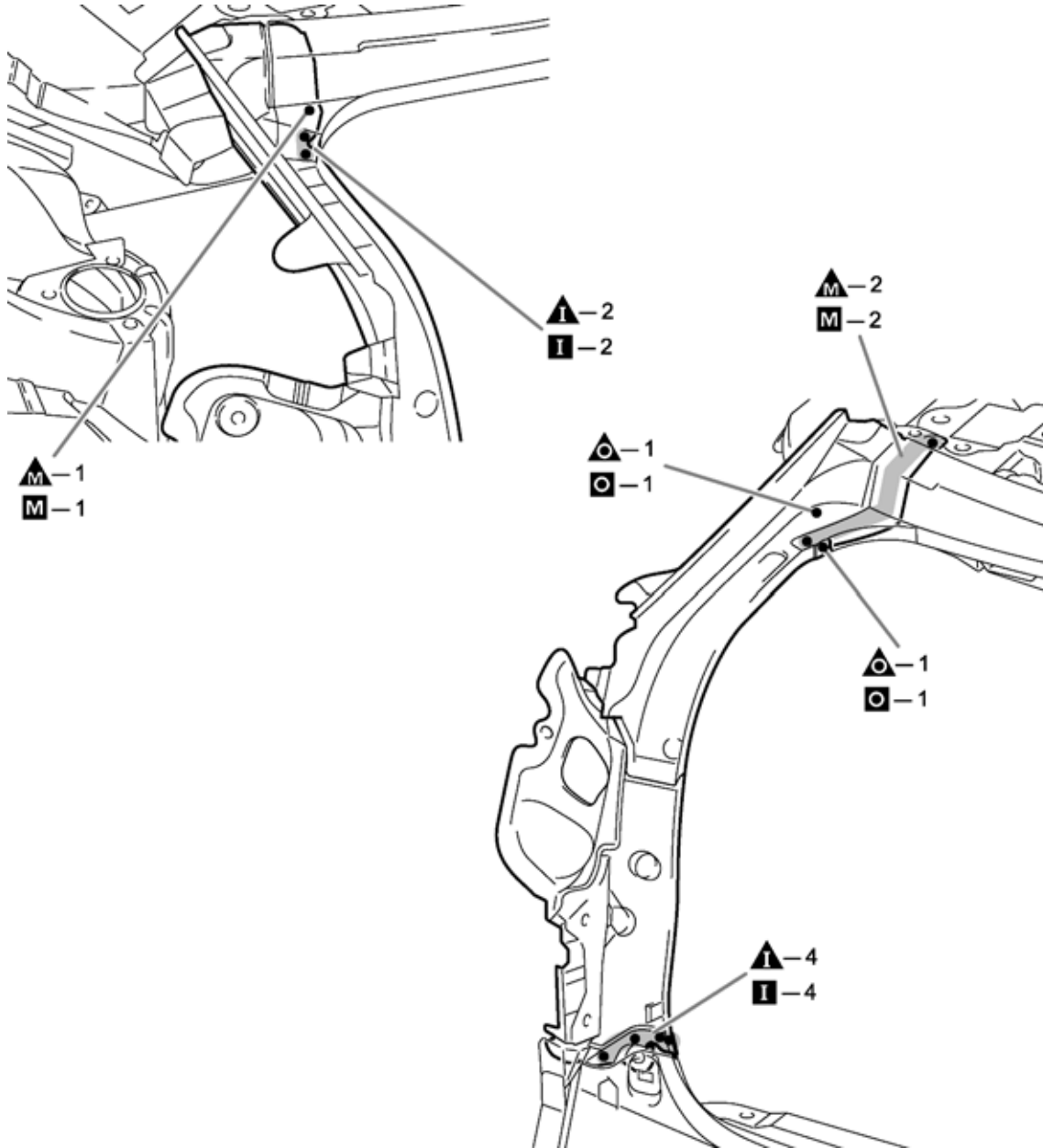
REMOVAL

△ I M : Remove Weld Points

INSTALLATION

○ I M : MIG Plug Weld

REMOVAL-INSTALLATION



B0709140147

INSTALLATION POINT

- 1 Temporarily install the new parts and measure each part of the new parts in accordance with the body dimension diagram. (See the body dimension diagram)
- 2 Inspect the fitting of the related parts around the new parts before welding. This affects the appearance of the finish.
- 3 After welding, apply body sealer and undercoating to the corresponding parts. (See the paint-coating)