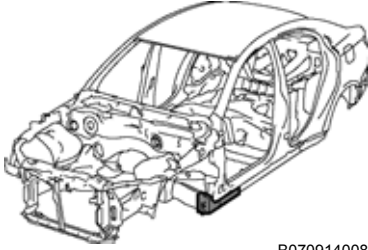








## ROCKER OUTER PANEL (CUT-P)

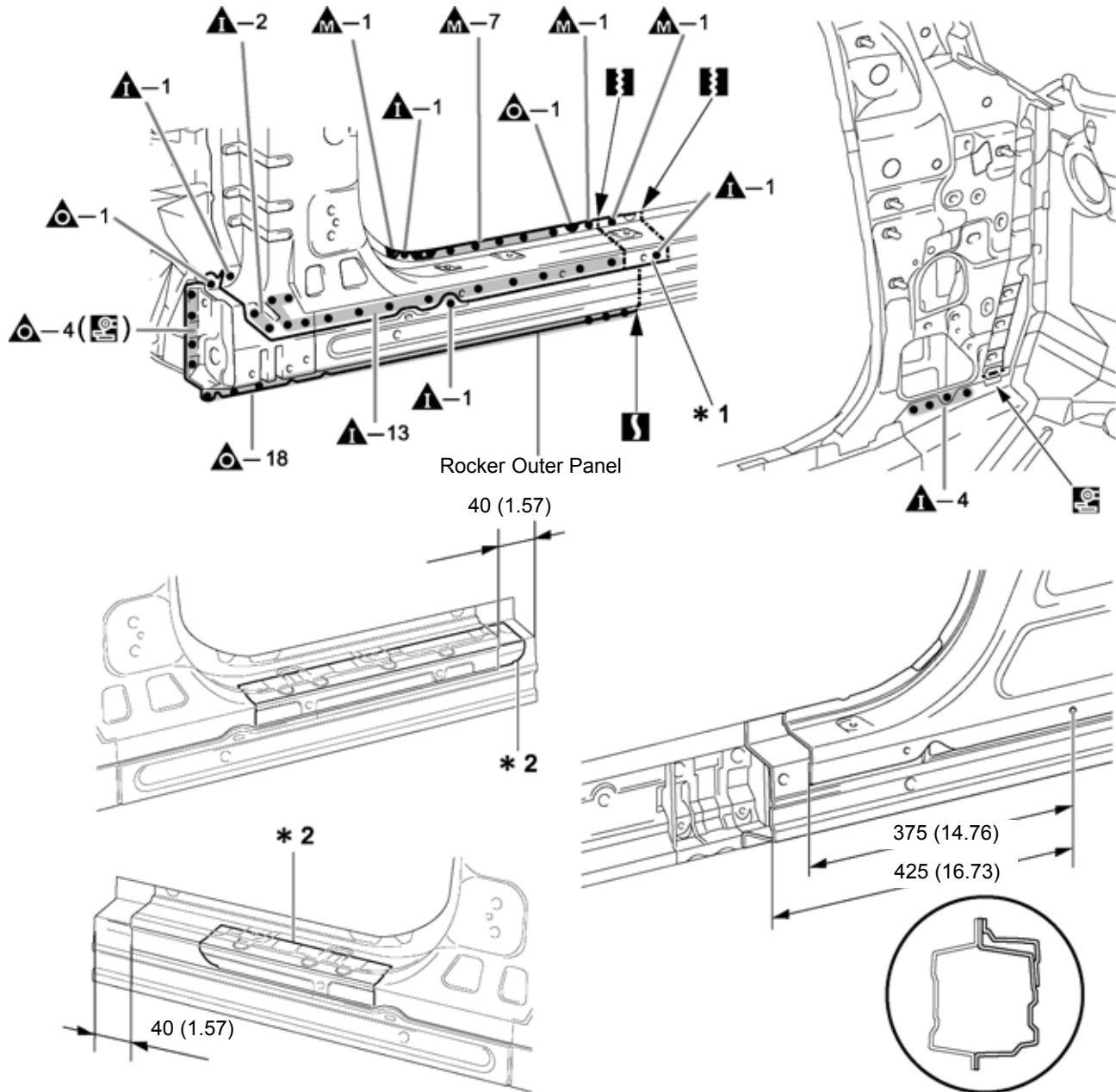


## Symbol meaning

   : Remove Weld Points     : Cut and Join Location

 : Cut with Disc Sander etc.     : Cut Location

## REMOVAL



mm (in.)

B0709140088A

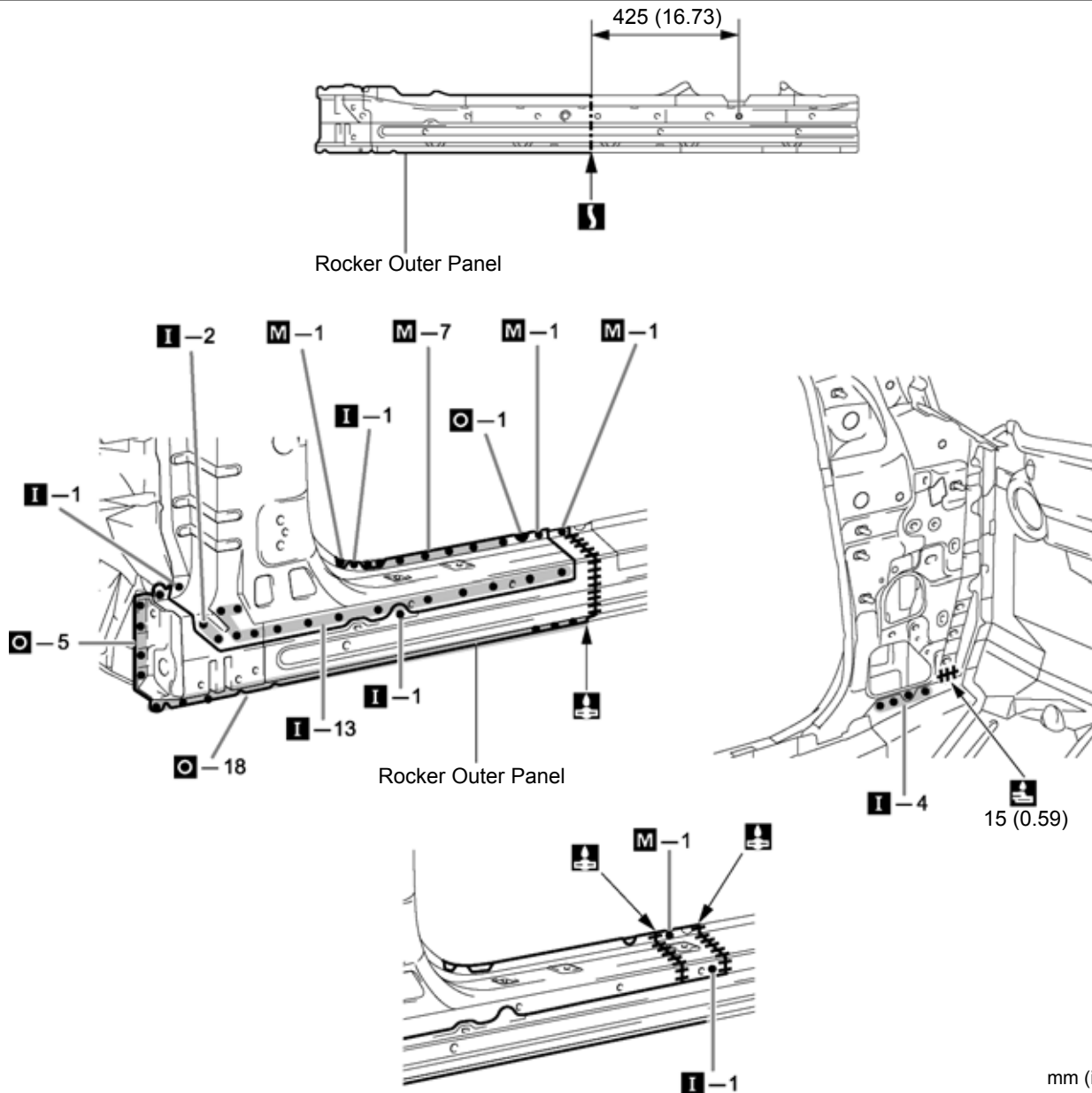
## REMOVAL POINT

- 1 \*1 is reused.
- 2 Cut carefully not to damage \*2 when you cut the rocker outer panel.

## Symbol meaning

 **I M** : MIG Plug Weld  
  : Tack Weld  
  : Butt Weld  
  : Cut and Join Location

## INSTALLATION



mm (in.)

B0709140089

## INSTALLATION POINT

- 1 Temporarily install the new parts and measure each part of the new parts in accordance with the body dimension diagram. (See the body dimension diagram)
- 2 Inspect the fitting of the related parts around the new parts before welding. This affects the appearance of the finish.
- 3 After welding rocker outer panel to the vehicle side, install outer panel.
- 4 After welding, apply polyurethane foam to the corresponding parts. (See the paint-coating)
- 5 After welding, apply body sealer and undercoating to the corresponding parts. (See the paint-coating)
- 6 After applying the top coat, apply anti-rust agent to the internal panel portion of the closed section structural weld points.