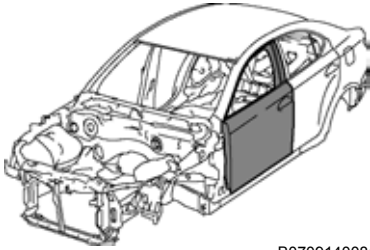



FRONT DOOR OUTER PANEL (ASSY)

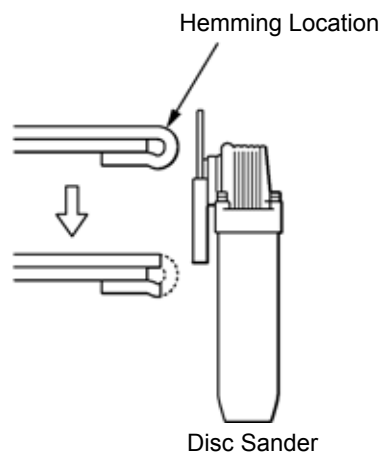
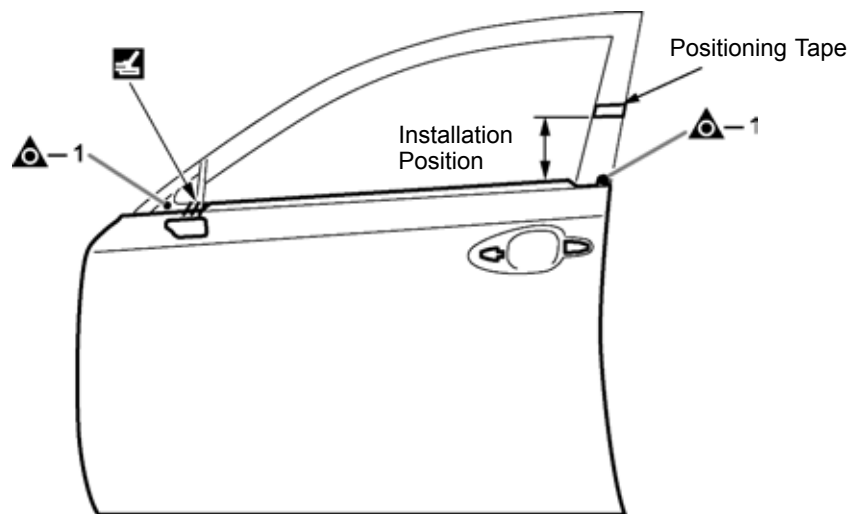


B0709140081

Symbol meaning

△ : Remove Weld Points  : Braze

REMOVAL



B0709140082

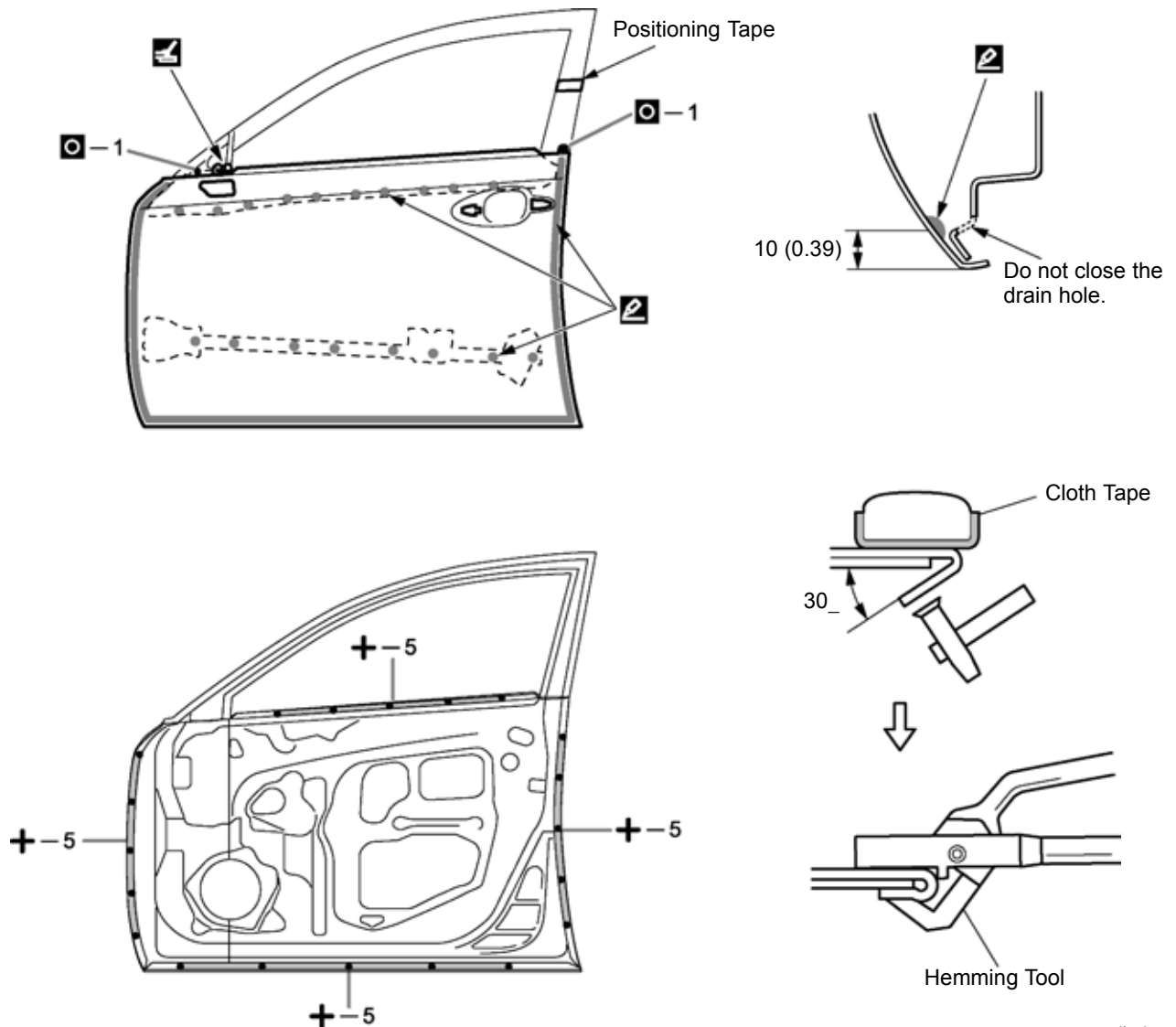
REMOVAL POINT

- 1 Before removing the outer panel, mark the installation position with tape.
- 2 Before removing the outer panel, establish its exact position in relation to the window frame using a reference marker, etc.
- 3 After grinding off the hemming location, remove the outer panel.

Symbol meaning

◻ : MIG Plug Weld + : Spot MIG Weld  : Braze  : Body Sealer

INSTALLATION



mm (in.)

B0709140083

INSTALLATION POINT

- 1 Before temporarily installing the new parts, apply body sealer to the reinforcement, side impact protection beam and backside of the new parts.
HINT:
 - 1) Apply sealer evenly about 10 mm (0.39 in.) from the flange and 3 mm (0.12 in.) in diameter on the outer panel and apply just enough sealer for the reinforcement and side impact protection beam to make contact.
- 2 Bend the flange hem about 30° with a hammer and dolly. Then, fasten tightly with a hemming tool.
HINT:
 - 1) Perform hemming in three steps, being careful not to warp the panel.
 - 2) If a hemming tool cannot be used, hem with a hammer and dolly.
- 3 After applying the top coat, apply anti-rust agent to the internal panel portion of the closed section structural weld points.