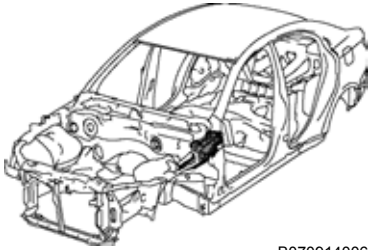


COWL TOP SIDE PANEL (ASSY)



B0709140066

With the cowl top to apron brace removed.

Symbol meaning

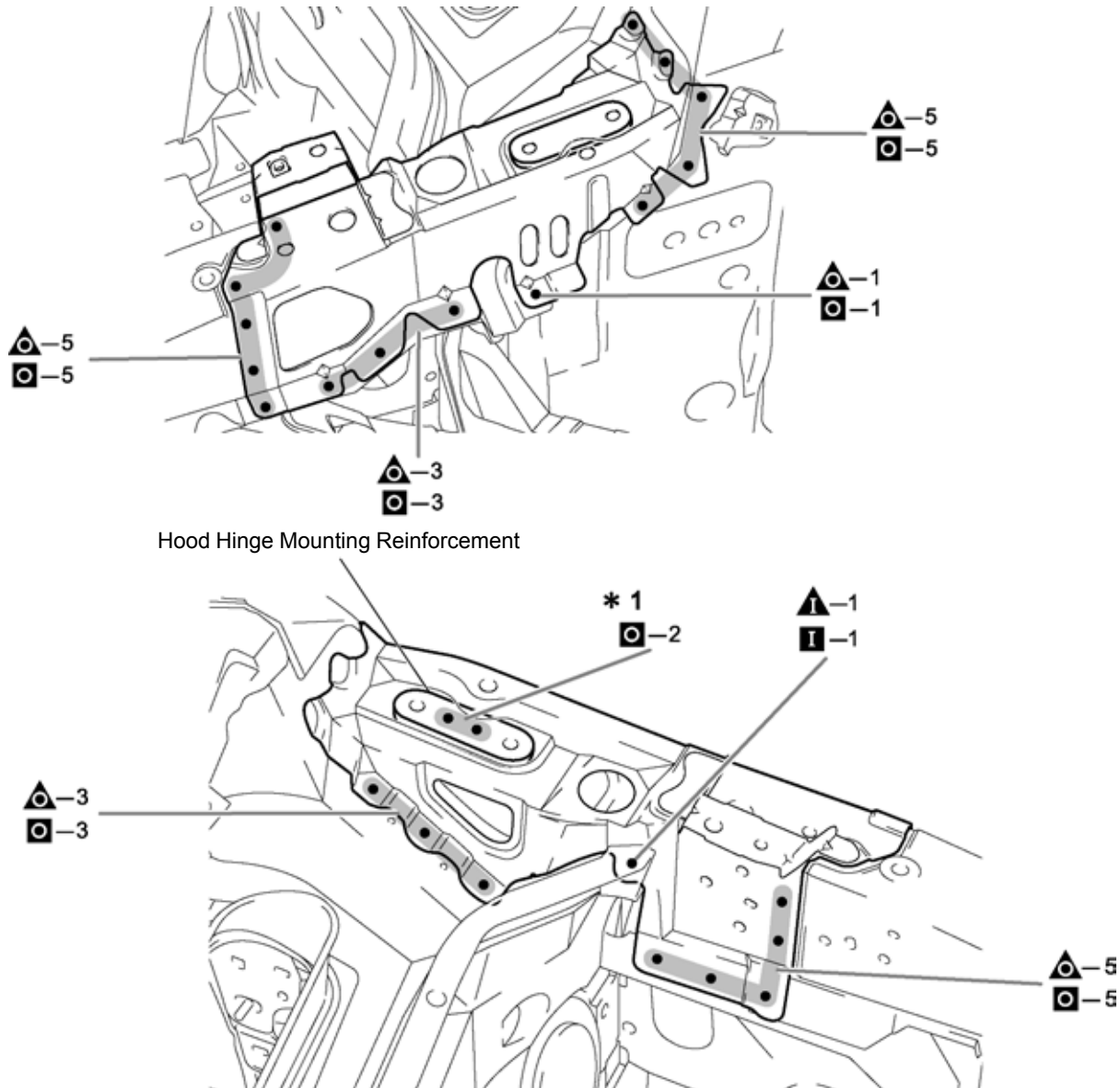
REMOVAL

: Remove Weld Points

INSTALLATION

: MIG Plug Weld

REMOVAL-INSTALLATION



B0709140067

INSTALLATION POINT

- 1 Temporarily install the new parts and measure each part of the new parts in accordance with the body dimension diagram. (See the body dimension diagram)
- 2 After welding, apply body sealer and undercoating to the corresponding parts. (See the paint-coating)
- 3 After applying the top coat, apply anti-rust agent to the internal panel portion of the closed section structural weld points.
- 4 *1 only necessary for installation.