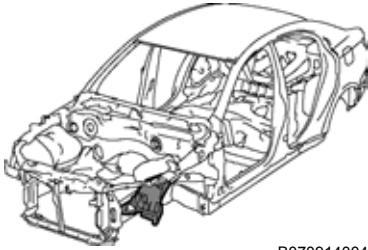


FRONT FENDER FRONT APRON (ASSY)



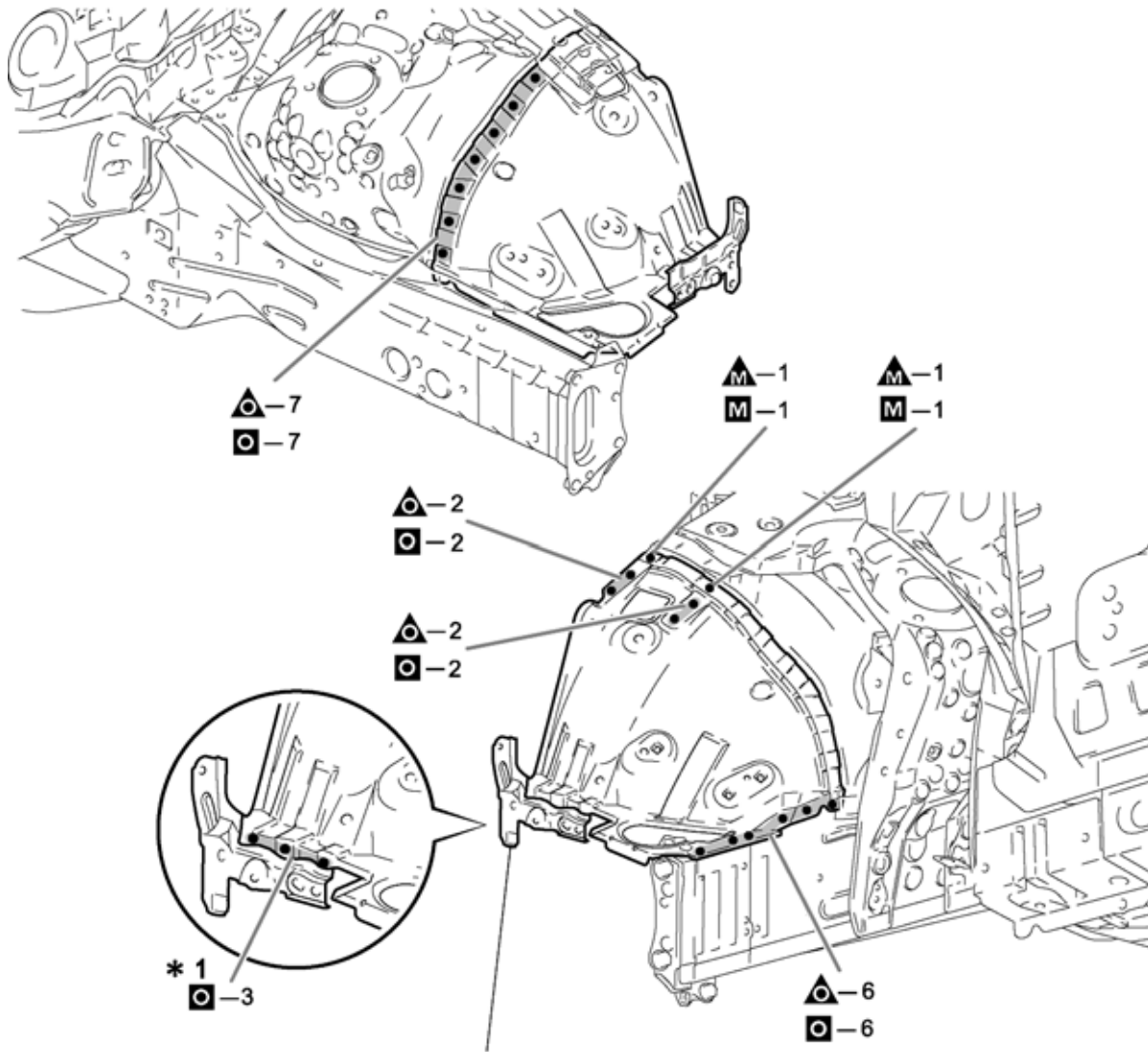
B0709140043

With the radiator support removed.

Symbol meaning

REMOVAL	△ : Remove Weld Points
INSTALLATION	◻ M : MIG Plug Weld

REMOVAL-INSTALLATION



LH: Front End Panel Mounting LH Bracket
RH: Radiator Support To Front Fender Bracket

B0709140044A

INSTALLATION POINT

- 1 Temporarily install the new parts and measure each part of the new parts in accordance with the body dimension diagram. (See the body dimension diagram)
- 2 Inspect the fitting related around the new parts before welding. This affects the appearance of the finish.
- 3 *1 only necessary for installation.
- 4 After welding, apply body sealer and undercoating to the corresponding parts. (See the paint-coating)