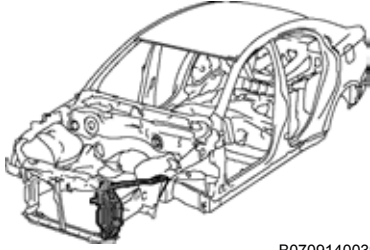


RADIATOR SUPPORT (ASSY)



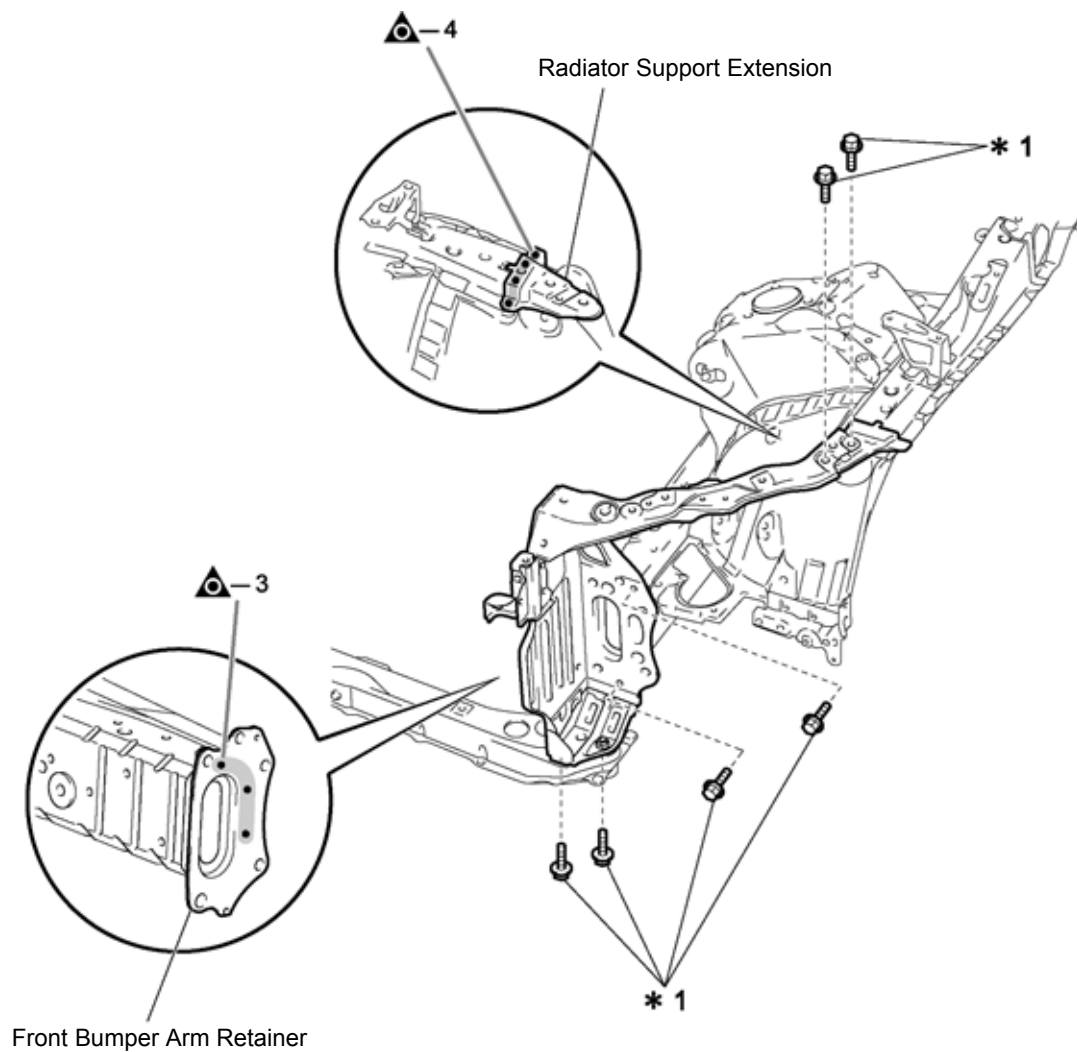
B0709140039

Symbol meaning

REMOVAL

△ : Remove Weld Points

REMOVAL



B0709140040

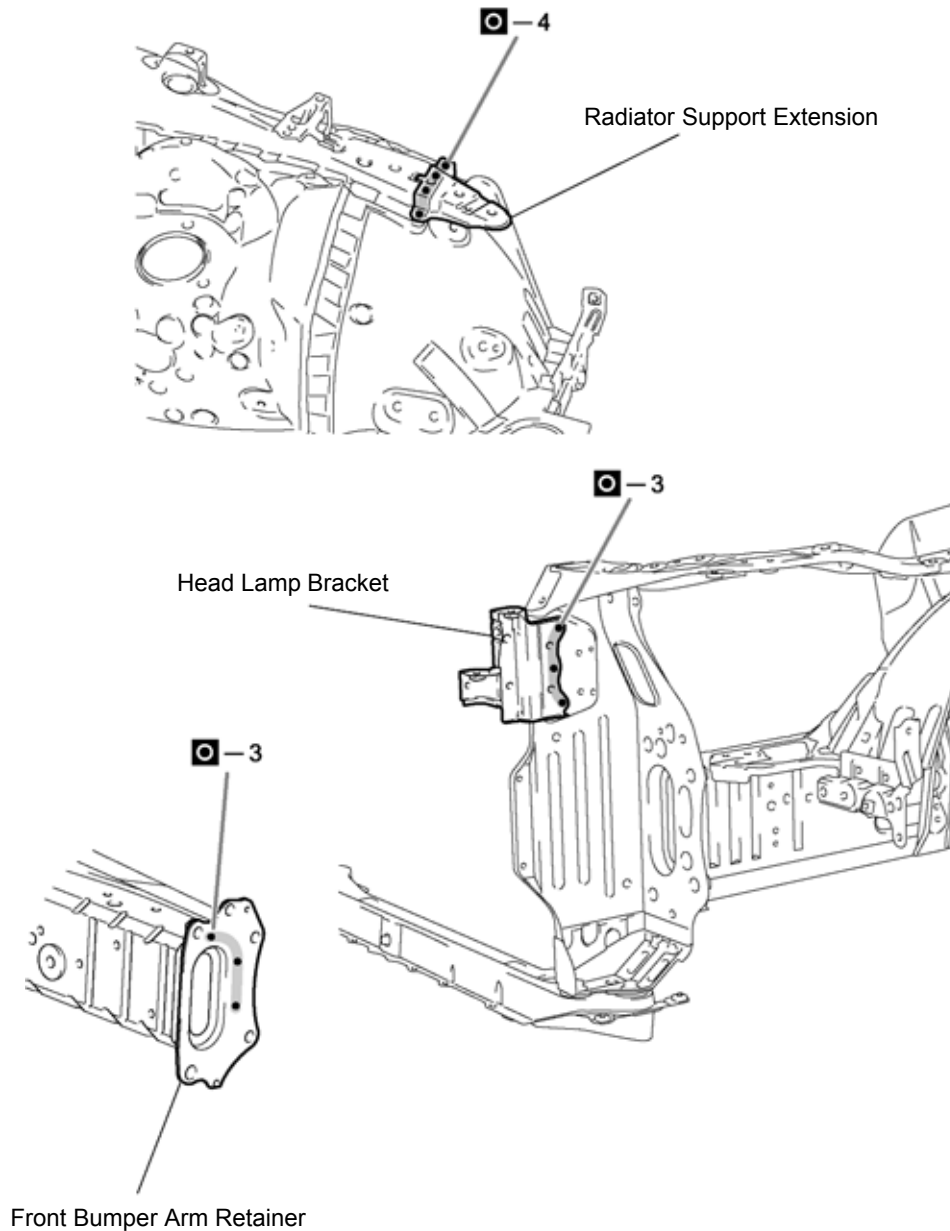
REMOVAL POINT

- 1 *1: Bolt.
- 2 If the radiator support extension and front bumper arm retainer are not damaged, leave attached to vehicle and continue work.

Symbol meaning

⊙ : MIG Plug Weld

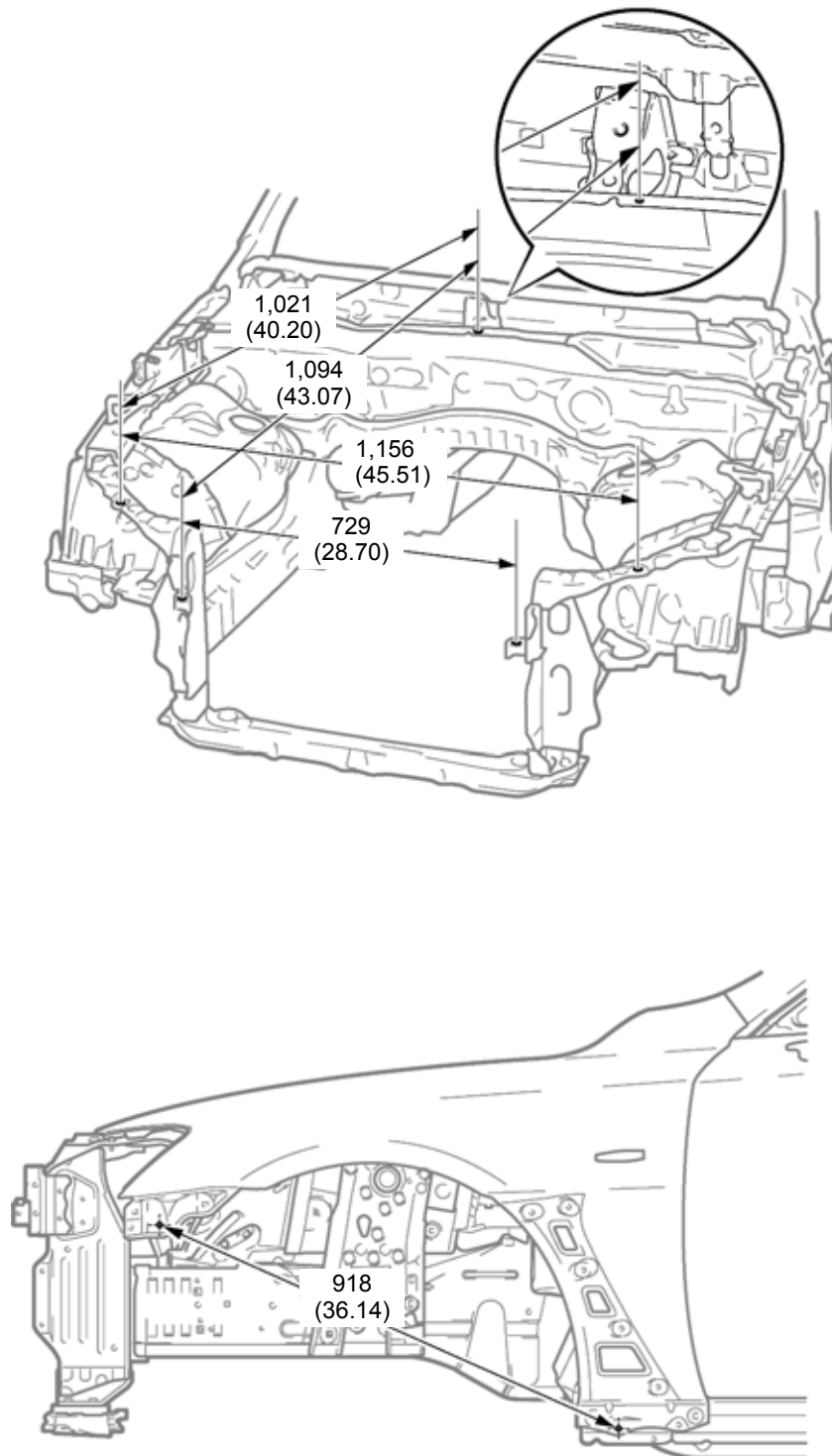
INSTALLATION



B0709140041

INSTALLATION POINT

- 1 Temporarily install the new parts and measure each part of the new parts in accordance with the body dimension diagram. (See the body dimension diagram)
- 2 Inspect the fitting of the related parts around the new parts before welding. This affects the appearance of the finish.



mm (in.)

B0709140042

INSTALLATION POINT

- 1 These values are reference values.
- 2 Measure the dimensions before installing the headlights.