

1998 Lexus LS400

Submodel: | Engine Type: V8 | Liters: 4.0
Fuel Delivery: FI | Fuel: GAS

ENGINE IMMOBILISER SYSTEM
REGISTRATION PROCEDURE

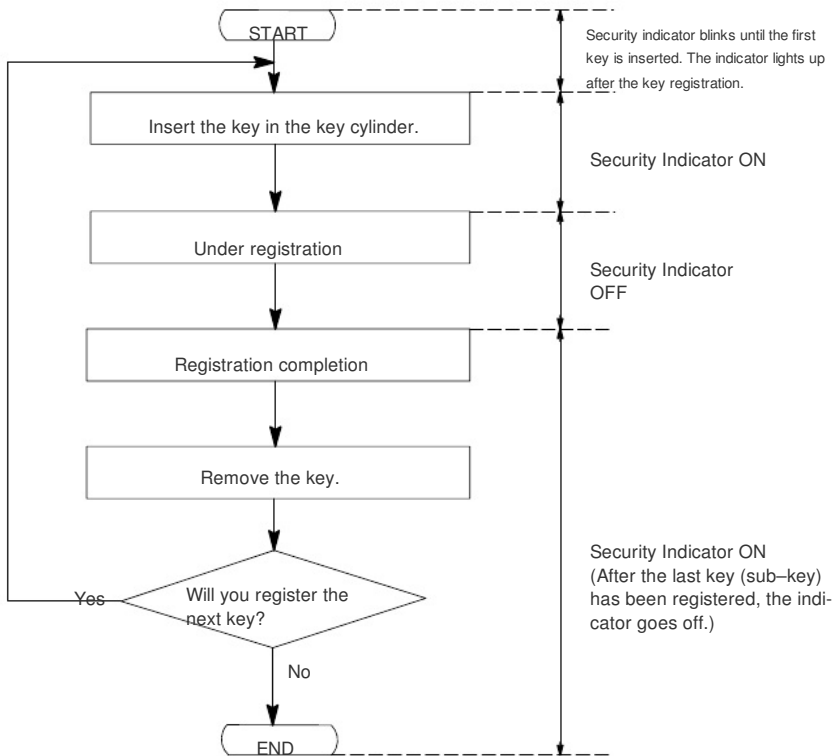
BB007-01

1. KEY REGISTRATION IN AUTOMATIC REGISTRATION MODE

(a) Registration of a new transponder key.

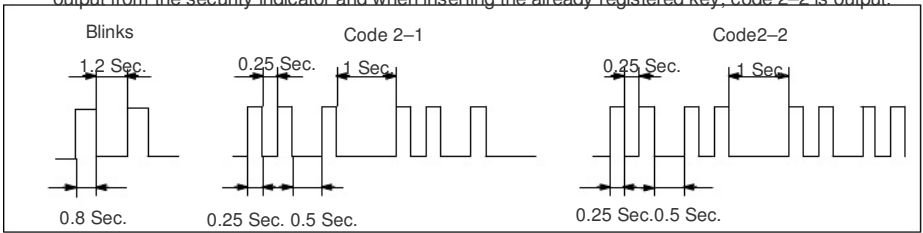
HINT:

- This must be done when you install a new ECM.
- The new ECM is on the automatic key code registration mode. The already fixed number of key codes for this ECM can be registered.
On this type of vehicle, up to 4 key codes can be registered.
- In the automatic registration mode, the last key registered becomes sub-key.



HINT:

- When a key is not inserted in the key cylinder on the automatic registration mode, the security indicator always lights on.
- When the immobiliser system operates normally and the key is pull out, the security indicator blinks.
- When key code registration could not be performed on the automatic registration mode, code 2-1 is output from the security indicator and when inserting the already registered key, code 2-2 is output.



(b) Automatic registration mode completion

If completing the mode forcibly when more than 1 key code have been registered on the automatic registration mode, perform the following procedures.

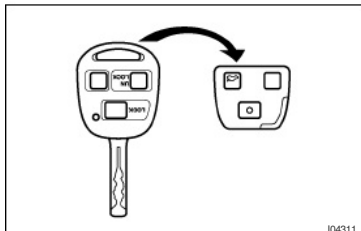
After 1 more key code have been registered with master key, perform step (1) or (2) without pulling the key out or inserting the already registered key.

- (1) Depress and release brake pedal 5 times or more within 15 sec.
- (2) With the LEXUS hand-held tester, require automatic registration mode completion.

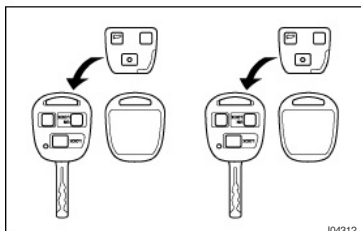
2. REGISTRATION ADDITIONAL OF MASTER KEY

HINT:

Key registration of new master key and new sub-key on this vehicle when new ignition cylinder and key set, and new lock cylinder set including ignition key cylinder are installed.



- (a) Removing wire-less and immobiliser module from original master key.



- (b) Masking new master key.
After replacing and installing new ignition cylinder, install removed original modules into new 2 key housing as supply parts.

- (c) Registration of supplied new sub-key and /or master key
Register supplied new sub-key and /or master key by using new master key.
(See page [BE-236](#))

NOTICE:

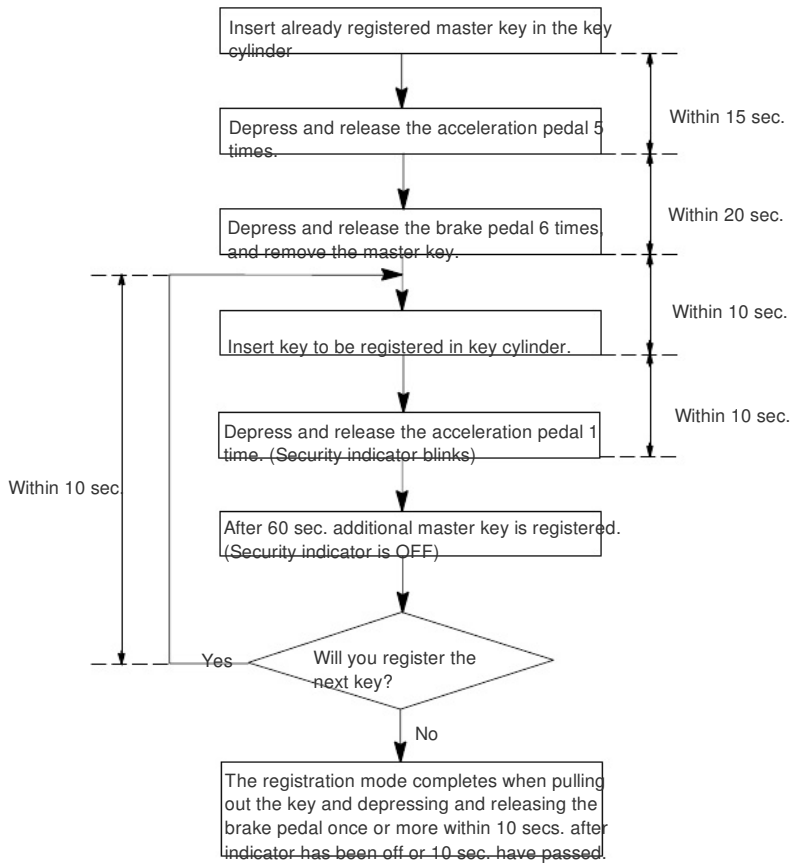
In case of replacing with ignition cylinder and key set, door locks cannot be opened by new ignition keys. Therefore, to avoid any trouble caused by empty battery of transmitter of new ignition key, please bring the original key while driving.

- (d) There are 2 ways for registration of additional master key, one way is depressing brake pedal and acceleration pedal and the other way is using LEXUS hand-held tester.

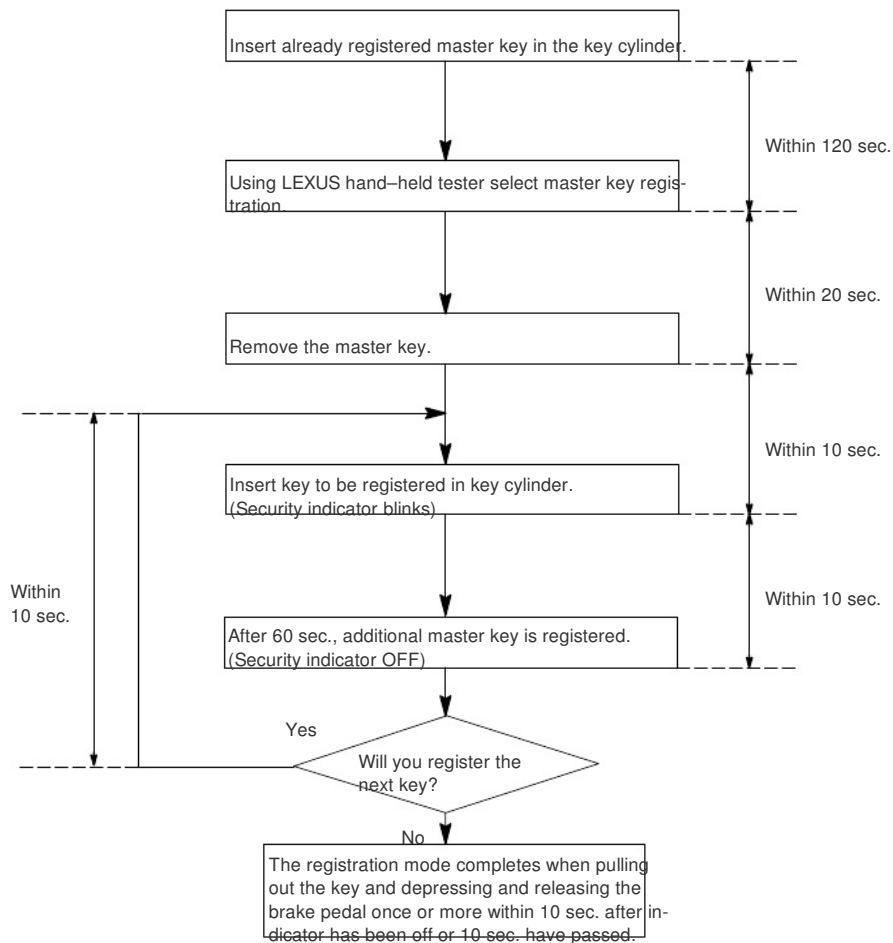
HINT:

- It is possible to register up to 7 master key codes including the already registered key code.
- When any operation time described below is over, registration mode completes.
- When the next procedure is performed while the timer is working, the timer completes counting time, then next timer starts.
- When replacing "Ignition Cylinder Key Set" or "Lock Cylinder Set" and register according to the following procedure using the original master key. However, after the registration of the additional master key, as the original master key and the original sub-key is not necessary any more, so erase registration of those key codes.

(1) Depressing brake pedal and acceleration pedal:



(2) Using LEXUS hand-held tester:



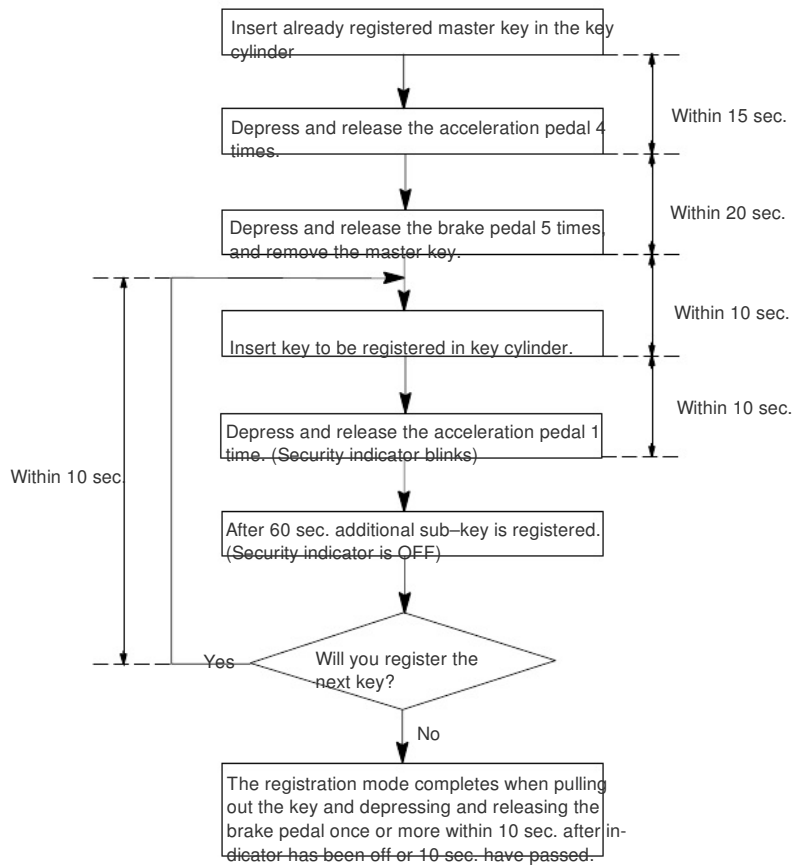
3. REGISTRATION ADDITIONAL OF SUB-KEY

There are 2 ways for registration of additional sub-key, one way is depressing brake pedal and acceleration pedal and the other way is using LEXUS hand-held tester.

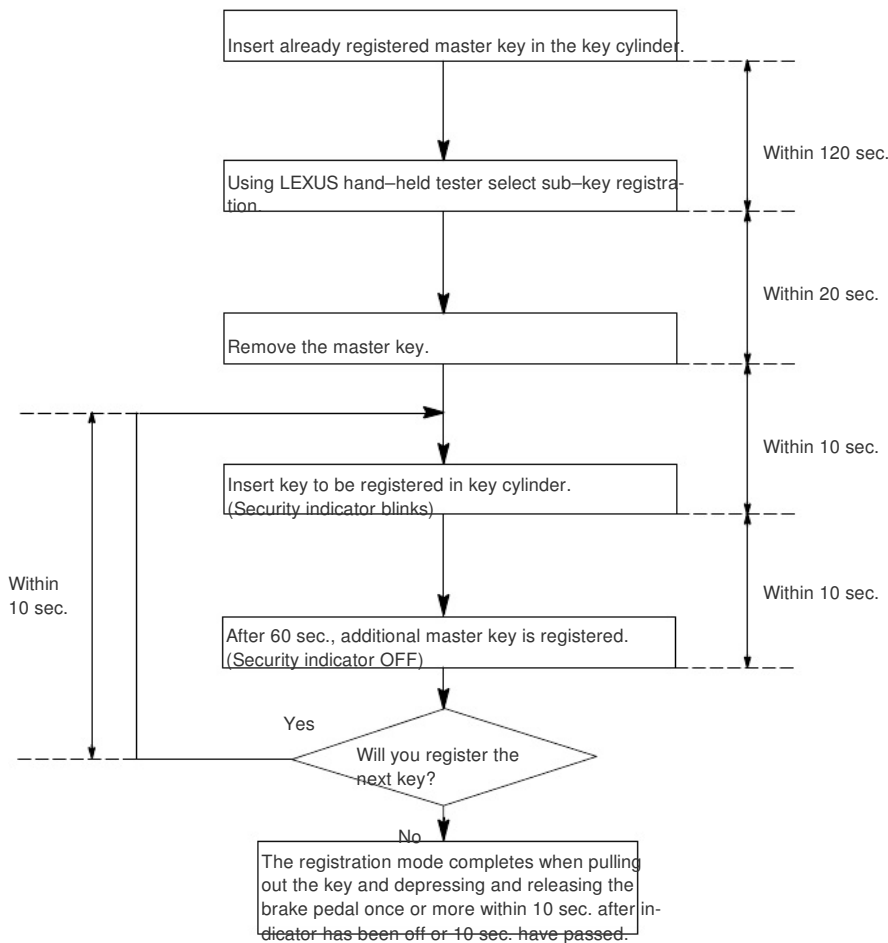
HINT:

- It is possible to register up to 3 sub-key codes including the already registered key code.
- When any operation time described below is over, registration mode completes.
- When the next procedure is performed while the timer is working, the timer completes counting time, then next timer starts.

(1) Depressing brake pedal and acceleration pedal:



(2) Using LEXUS hand-held tester:



4. ERASURE OF TRANSPONDER KEY CODE

There are 2 ways for erasure of transponder key code, one way is depressing brake pedal and acceleration pedal and the other way is using LEXUS hand-held tester.

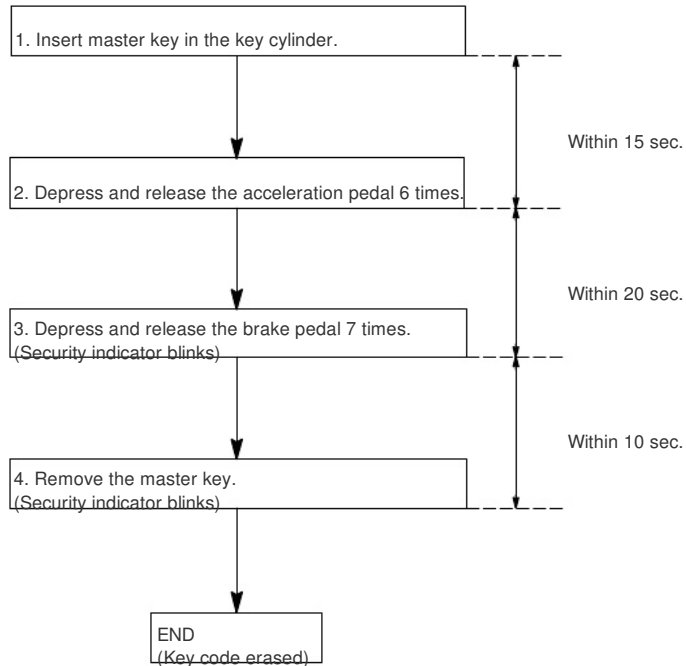
NOTICE:

Delete all other master and sub-key codes leaving the master key code to use the operation. When using the key which was used before deletion, it is necessary to register the code again.

HINT:

- When any operation time described below is over, registration mode completes.
- When the next procedure is performed while the timer is working, the timer completes counting time, then next timer starts.

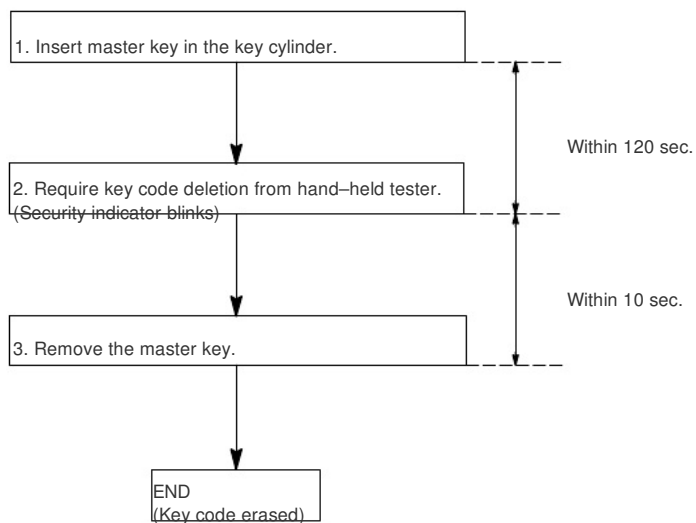
(1) Depressing brake pedal and acceleration pedal:



HINT:

When the key cannot be pulled out in the step 4, key code deletion is canceled.
(Security indicator is OFF.)

(2) Using LEXUS hand-held tester:



HINT:

When the key cannot be pulled out in the step 3, key code deletion is canceled.
(Security indicator is OFF.)