

DTC	P0135	Oxygen Sensor Heater Circuit Malfunction (Bank 1 Sensor 1)
------------	--------------	---

DTC	P0141	Oxygen Sensor Heater Circuit Malfunction (Bank 1 Sensor 2)
------------	--------------	---

DTC	P0155	Oxygen Sensor Heater Circuit Malfunction (Bank 2 Sensor 1)
------------	--------------	---

DTC	P0161	Oxygen Sensor Heater Circuit Malfunction (Bank 2 Sensor 2)
------------	--------------	---

CIRCUIT DESCRIPTION

Refer to DTC P0125 on page [DI-207](#).

DTC No.	DTC Detecting Condition	Trouble Area
P0135	When the heater operates, heater current exceeds 2 A (2 trip detection logic)	<ul style="list-style-type: none"> • Open or short in heater circuit of heated oxygen sensor • Heated oxygen sensor heater • ECM
P0141	Heater current of 0.2 A or less when the heater operates with +B > 10.5 V and < 11.5 V (2 trip detection logic)	
P0155	Heater current of 0.25 A or less when the heater operates with +B ≥ 11.5 V (2 trip detection logic)	
P0161		

HINT:

- Bank 1 refers to bank that includes cylinder No.1.
- Bank 2 refers to bank that does not include cylinder No.1.
- Sensor 1 refers to the sensor closer to the engine body.
- Sensor 2 refers to the sensor farther away from the engine body.

WIRING DIAGRAM

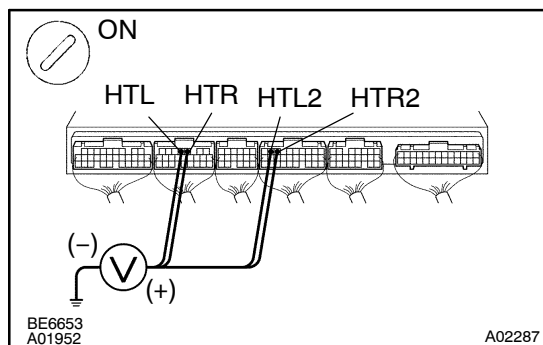
Refer to DTC P0125 on page [DI-207](#).

INSPECTION PROCEDURE

HINT:

Read freeze frame data using LEXUS hand-held tester or OBD II scan tool. Because freeze frame records the engine conditions when the malfunction is detected. When troubleshooting, it is useful for determining whether the vehicle was running or stopped, the engine was warmed up or not, the air-fuel ratio was lean or rich, etc. at the time of the malfunction.

1 Check voltage between terminals HTR, HTR2, HTL, HTL2 of ECM connectors and body ground.



PREPARATION:

- Remove the ECM protector.
- Turn the ignition switch ON.

CHECK:

Measure the voltage between terminals HTR, HTR2, HTL, HTL2 of the ECM connectors and body ground.

HINT:

- Connect terminal HTR to bank 2 sensor 1.
- Connect terminal HTR2 to bank 2 sensor 2.
- Connect terminal HTL to bank 1 sensor 1.
- Connect terminal HTL2 to bank 1 sensor 2.

OK:

Voltage: 9 – 14 V

OK

Check and replace ECM (See page [IN-30](#)).

NG

2 Check resistance of heated oxygen sensor heater (See page [SF-83](#)).

NG

Replace heated oxygen sensor.

OK

Check and repair harness or connector between EFI main relay and heated oxygen sensor, and heated oxygen sensor and ECM (See page [IN-30](#)).