

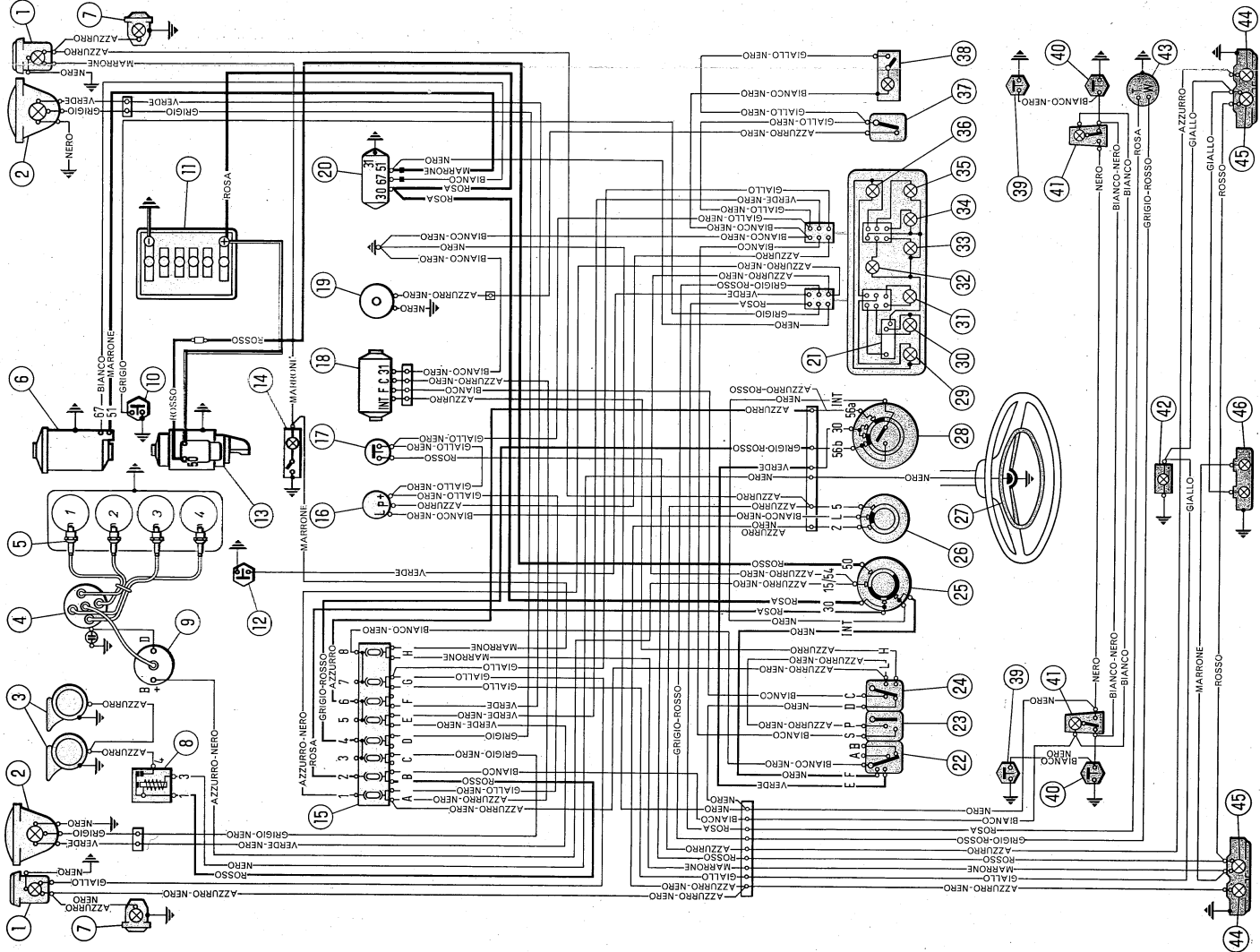
WIRING DIAGRAM

1. Front parking and direction indicator lamps.
2. Headlamps (high and low beams).
3. Horns.
4. Ignition distributor.
5. Spark plugs.
6. Generator.
7. Direction indicator side repeaters.
8. Horn relay switch.
9. Ignition coil.
10. Sending unit, for insufficient oil pressure indicator.
11. Battery.
12. Thermostatic sending unit for heat indicator.
13. Starter.
14. Engine compartment lamp, with incorporated switch.
15. Fuses.
16. Flasher, direction indicators.
17. Stop lights mechanically-operated switch.
18. Windshield wiper motor.
19. Electrofan.
20. Generator regulator.
21. Fuel level gauge.
22. Outer lighting switch.
23. Instrument cluster light switch.
24. Windshield wiper switch.
25. Lock switch.
26. Direction indicators switch.
27. Horn ring.
28. Outer lighting change-over and headlamp flashes switch.
29. Fuel reserve indicator (red).
30. Insufficient engine oil pressure indicator (red).
31. Generator charge indicator (red).
32. Instrument cluster light.
33. Direction indicators tell-tale (green).
34. Parking lights indicator (green).
35. High beam indicator (blue).
36. Heat indicator (red).
37. Electrofan switch.
38. Glove compartment light, with incorporated jam switch.
39. Jam switches, between front doors and pillars, for lamps 41.
40. Jam switches, between rear doors and pillars, for lamps 41.
41. Pillar lamps with incorporated switch.
42. Luggage compartment light.
43. Fuel level gauge sending unit.
44. Rear parking and stop lights.
45. Number plate lights.

Note. - Mark — means that cable is provided with numbered strip or ferrule.

CABLE COLOR CODE

Azzurro = Blue	Nero = Black
Bianco = White	Rosa = Pink
Giallo = Yellow	Rosso = Red
Grigio = Grey	Verde = Green
Marrone = Brown	INT = Switch



3-Amp. fuses
panel to the
are replacing
e of blowing,

battery charge
starting.

