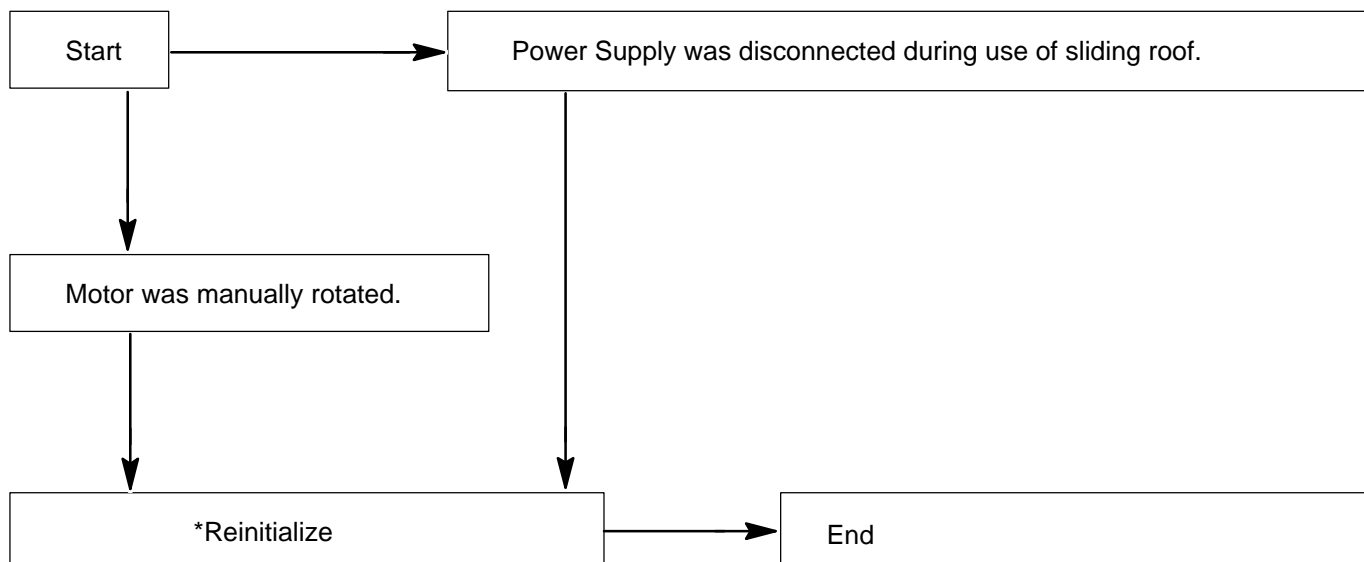


SLIDING ROOF SYSTEM

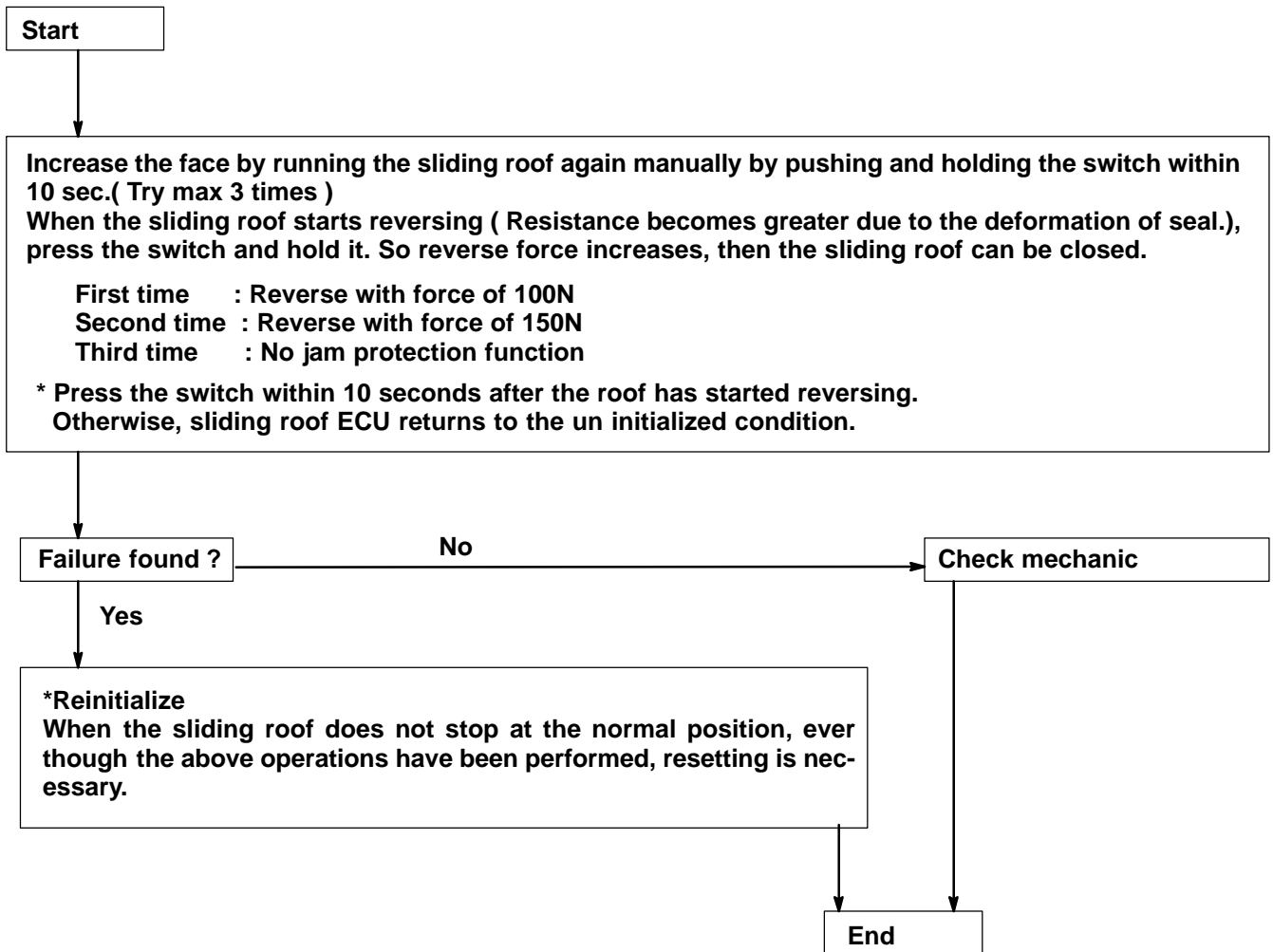
TROUBLESHOOTING

BE009-08

1	Sliding Roof does not stop at correct position.
---	---



2	Sliding Roof always reopens (anti trap function).
---	---

***Reinitializing method**

- Move the sliding roof to the maximum tilted position.
- Release the switch, press the switch again and hold it for 10 secs.
- The sliding roof operates in a cycle of TILT DOWN → SLIDE OPEN → SLIDE CLOSE → TILT UP.
This completes reinitializing.